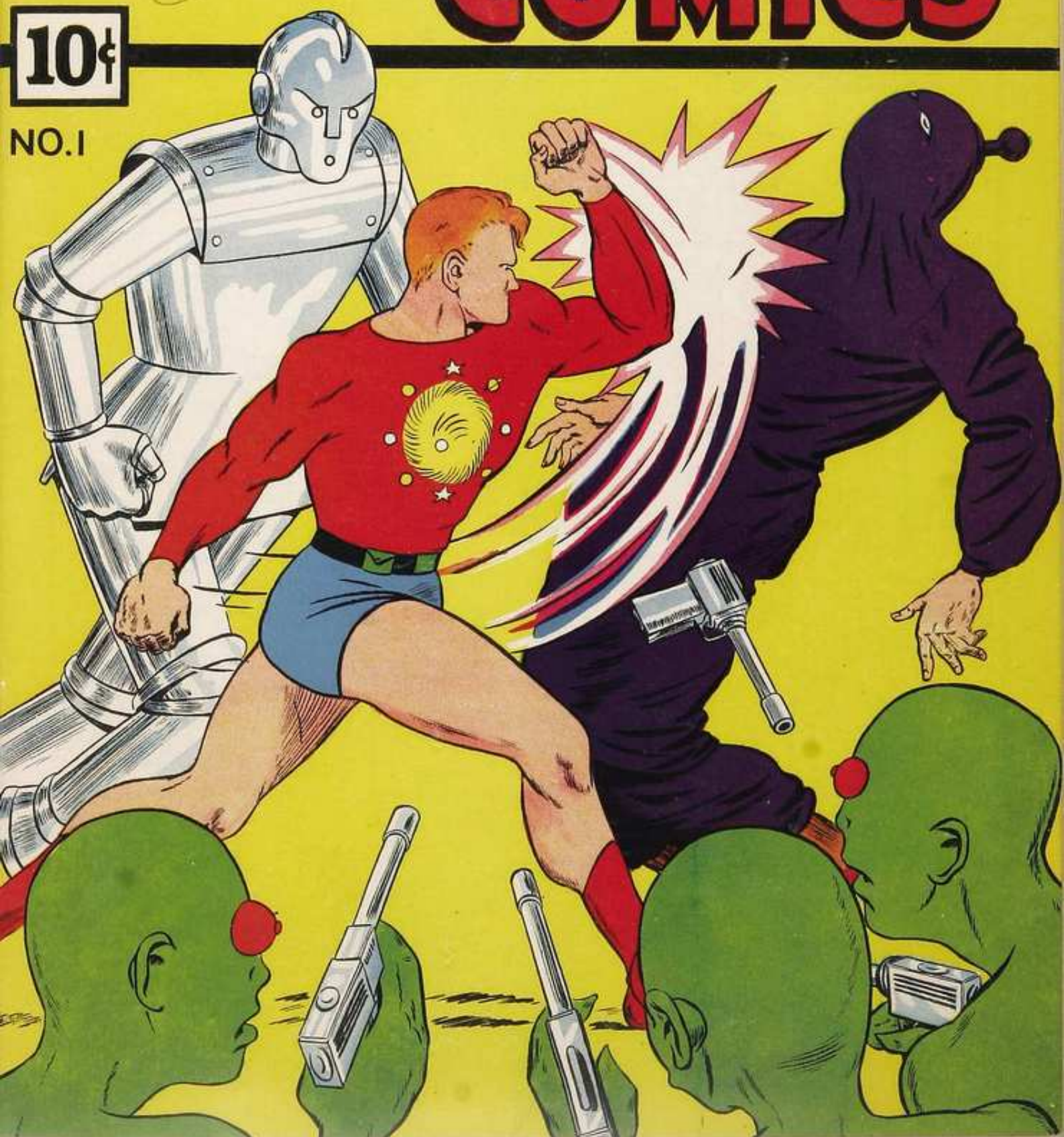


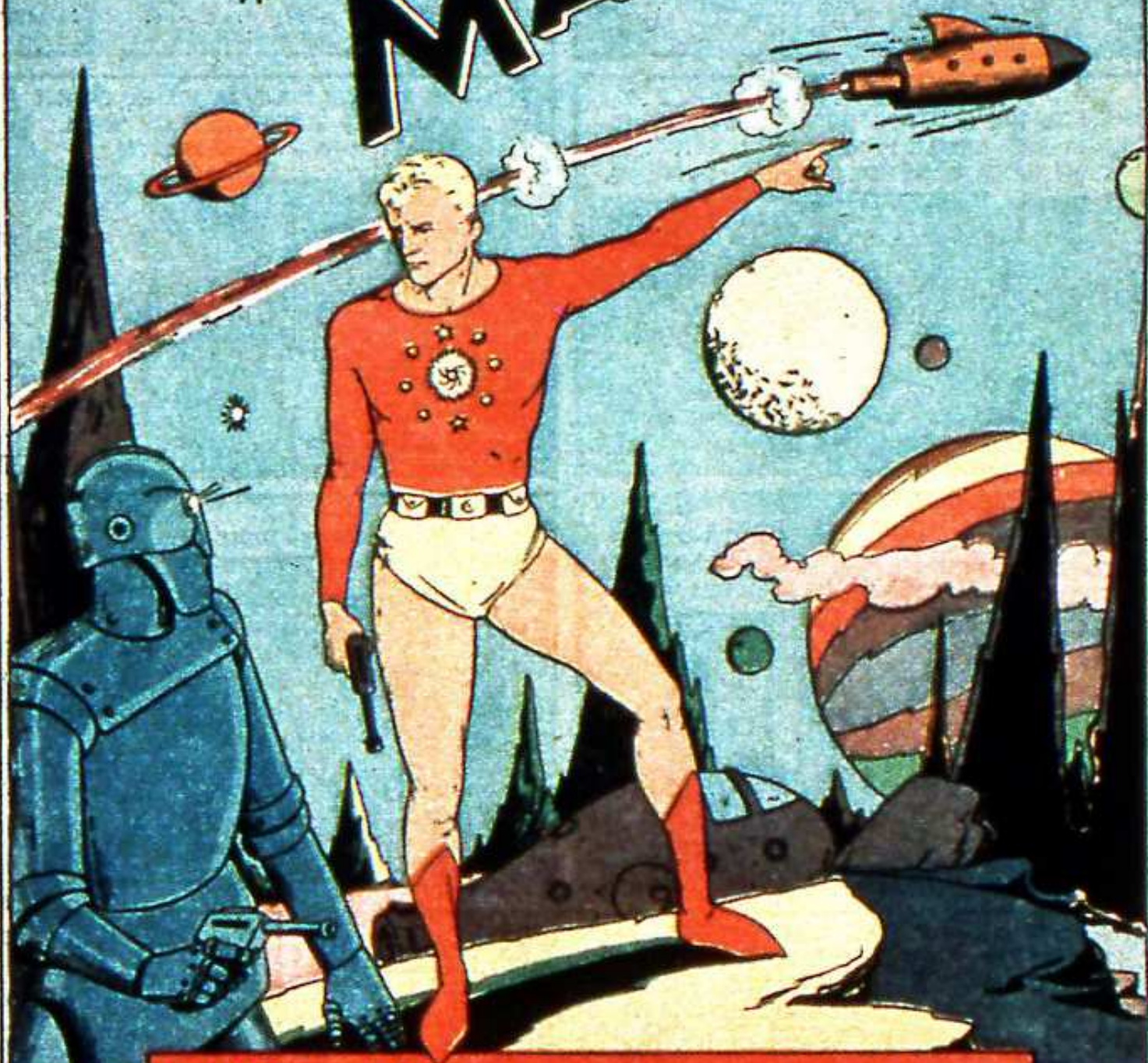
EXCITING COMICS

10¢

NO. 1



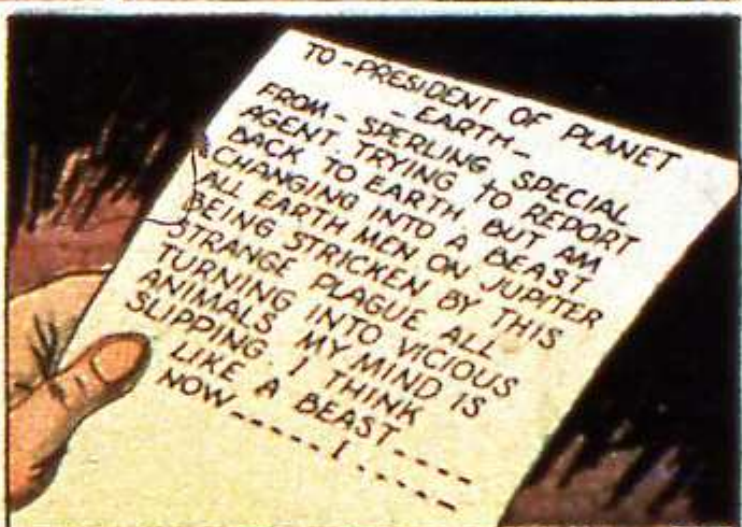
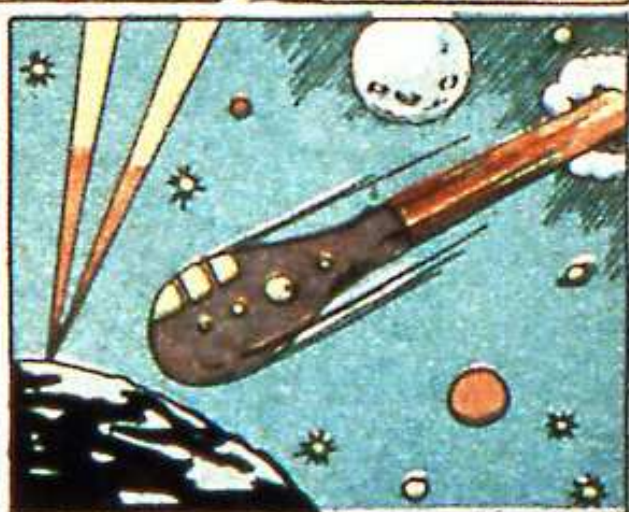
MAJOR MARS

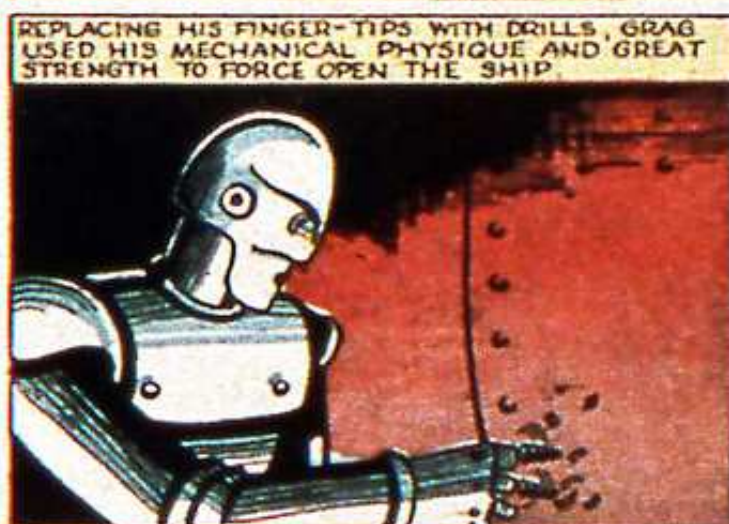
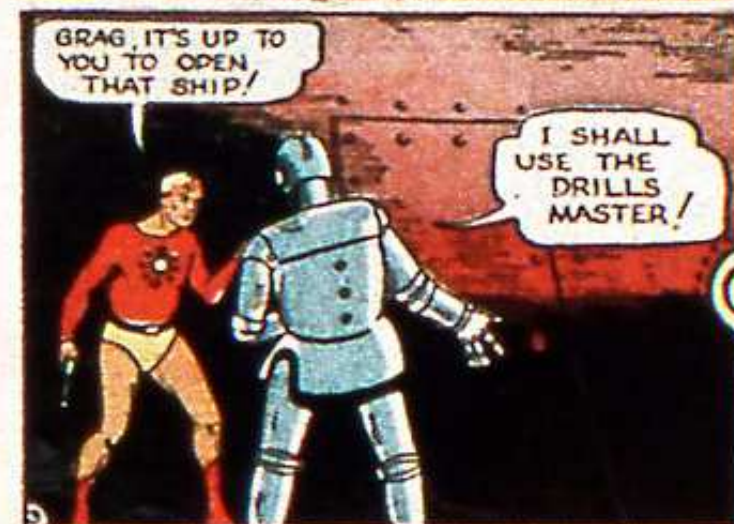
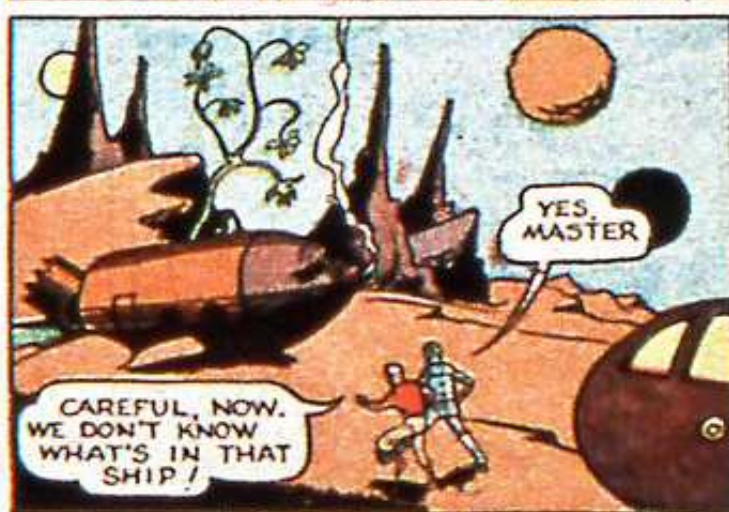
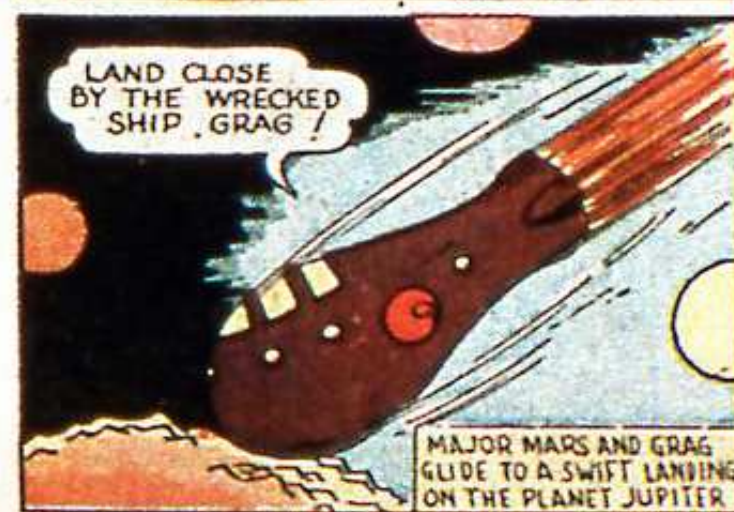


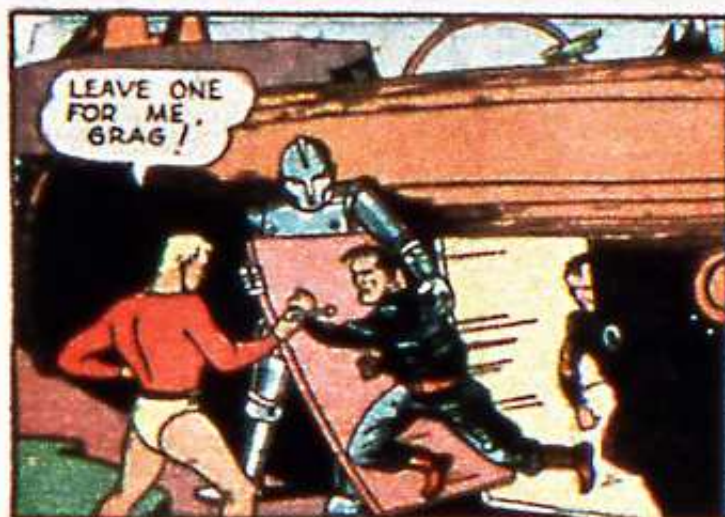
MAJOR MARS, WIZARD OF SCIENCE AND INVENTOR OF GRAG, THE ROBOT ENDOWED WITH A SYNTHETIC BRAIN. GRAG CAN THINK AND TALK!
BORN ON THE MOON, OF EARTHLY PARENTS, MAJOR MARS IS A ONE-MAN VIGILANCE COMMITTEE DEDICATED TO THE MAINTENANCE OF PEACE AMONG THE PLANETS!



FROM THE NORTH POLE GOES THE FLARE SIGNAL WHICH BRINGS MAJOR MARS FROM HIS HOME ON THE MOON







MAJOR MARS MET WITH A SURPRISE. THE SPACE EMPEROR SEEMED NOTHING MORE THAN A SHADOW. THE MAJOR'S ARMS PASSED DIRECTLY THROUGH HIM.



HE'S NOT HUMAN!

I'LL TAKE CARE OF YOU LATER, EARTHLING!

HE'S GOING RIGHT THROUGH THE WALL--LIKE A GHOST!

DEFEATED, MAJOR MARS GOES TO THE HOME OF JOAN JILSON, THE GOVERNOR OF JUPITER'S EARTH COLONY.



GLAD YOU'RE HERE, MAJOR MARS. SOMEONE MUST HELP US!

AS VICE-GOVERNOR, I ALSO WELCOME YOU.



I AM JOAN JILSON. DAD ASKED ME TO SHOW YOU THE EARTHMEN WHO BECAME BEASTS!

GOOD. PERHAPS THERE IS SOME CLUE



THEY CANNOT SPEAK. NO ONE KNOWS WHAT MADE THEM LIKE THIS!

AND THEY WERE ONCE EARTHMEN



SOMEONE LOCKED US IN HERE! WE'RE TRAPPED!

STAY CLOSE TO ME. WE'LL GET OUT!

CLICK!



THE CELLS ARE OPEN! THE APE MEN ARE FREE-----! THEY'LL KILL US!

THE DOOR IS RAY PROOF!



JOAN, YOU
TAKE THE GUN
AND HOLD THEM
BACK. I'LL
CONTACT
GRAG!



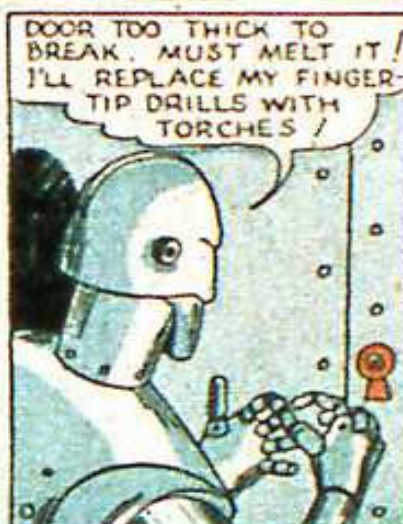
MAJOR MARS USES HIS MINIATURE ARM
TELEVISION SET TO SUMMONS GRAG

CALLING GRAG
CALLING GRAG
MAJOR MARS
CALLING GRAG!



WE ARE IN
CITY PRISON!

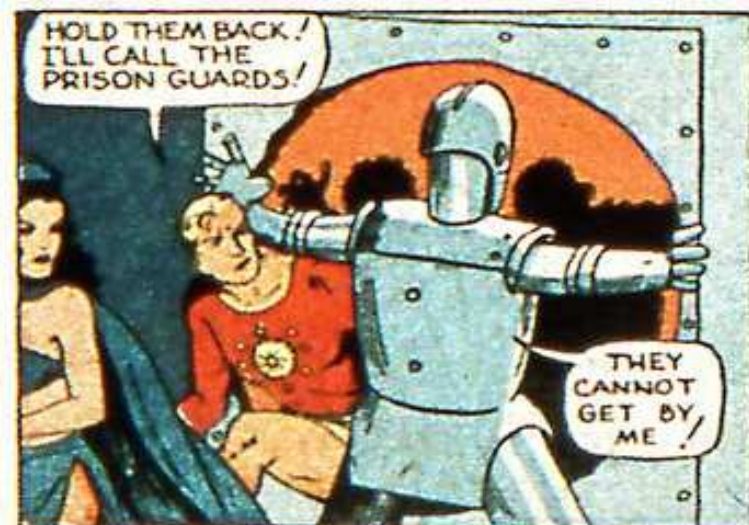
I'M COMING,
MASTER!



DOOR TOO THICK TO
BREAK. MUST MELT IT!
I'LL REPLACE MY FINGER-
TIP DRILLS WITH
TORCHES!



THE HOT POWER-FLAMES FROM
GRAG'S FINGER-TIPS
CARVE A HOLE THROUGH
THE DOOR.



HOLD THEM BACK!
I'LL CALL THE
PRISON GUARDS!

THEY
CANNOT
GET BY
ME!



I AM IN CHARGE OF
THE HOSPITAL AT THE
RADIUM MINES, AND MUST
REPORT AT ONCE

GOOD LUCK!
I'M OFF TO
MY SHIP--
I'VE WORK
TO DO!



IN THE LABORATORY OF MAJOR MARS'S SHIP,

THIS CHANGING OF MEN INTO BEASTS
MUST BE A THYMUS GLAND REACTION, I'LL
TRY AND DEVELOP A CURATIVE SERUM THAT
CAN BE INJECTED BY A HYPODERMIC NEEDLE



THE PLANETARY POLICE
MAY KNOW WHAT IS GOING
ON. I'LL SEE THEIR
COMMANDER!

BOLDER
THAN HE
HAD EVER
SEEN
THEM.
JUPITER'S
GREEN
MEN
CLUSTER
ABOUT
HIM.

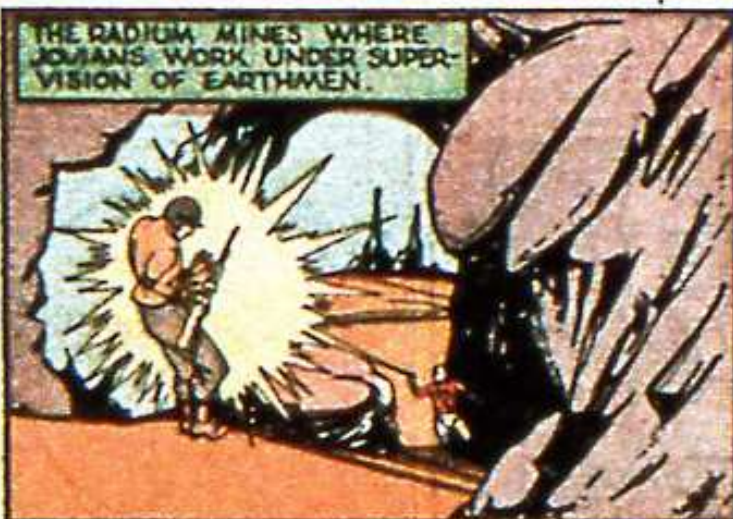


THE JOVIANS ARE GROW-
ING BOLDER. THEY'RE
UP TO SOMETHING!
WE SUSPECT THAT THEY'RE
USING THE RADIUM MINES
AS AN OPERATING BASE.

LOOKS LIKE
THE WORK OF
THE SPACE
EMPEROR!



THE RADIUM MINES WHERE
JOVIANS WORK UNDER SUPER-
VISION OF EARTHMEN.



MAJOR MARS SEES THE JOVIANS PAID
OFF WITH RAY GUNS A VIOLATION OF ALL
PLANETARY LAWS.



WITH THOSE GUNS
THEY'LL REBEL AND
DRIVE THE EARTH
COLONY INTO
SPACE!



THEY ARE
ALL ARMED,
YOUR
MAJESTY!



MAJOR MARS TAKES THE LOOKOUT BY
SURPRISE AND EASILY SUBDUES HIM.



START
TALKING!

WE ARE FORCED TO
OBEY THE SPACE EM-
PEROR OR HE WILL
CHANGE US INTO
APES! HE POSSESSES
THE MAGIC BELT
OF THE ANCIENTS,
A SUPER-RACE WHO
DWELT ON JUPITER
EONS AGO. THIS
BELT GIVES HIM
SUPER-HUMAN
POWERS!



MAJOR MARS HIDES THE EARTHMAN IN AN
ABANDONED MINE SHAFT.

BEFORE I GAG
YOU, WHO IS HE?
WHERE CAN I
FIND HIM?

I DON'T KNOW WHO HE
IS BUT HE ADDRESSES
A MEETING OF JOVIANS
TONIGHT IN THE
SACRED VALLEY!





MAJOR MARS AND JOAN ARE LED TO THE CASTLE OF THE SPACE EMPEROR TO AWAIT THEIR DOOM.



SOON YOU WILL BE DEAD!

THEY'VE SEALED THE ENTRANCE! IF I COULD ONLY CALL GRAG -- BUT THEY TOOK AWAY MY TELEVISION SET!



LOOK!



YOU CAN'T FIGHT HIM HE'S TOO STRONG!



GET BACK AGAINST THE WALL, JOAN!

MAJOR MARS IS NO MATCH FOR THE BESTIAL STRENGTH OF THE CREATURE.



NOW TO STICK HIM WITH THIS HYPODERMIC NEEDLE IF THE RESTORATIVE FLUID ONLY WORKS!



THE RESTORATIVE FLUID TAKES EFFECT ALMOST IMMEDIATELY.

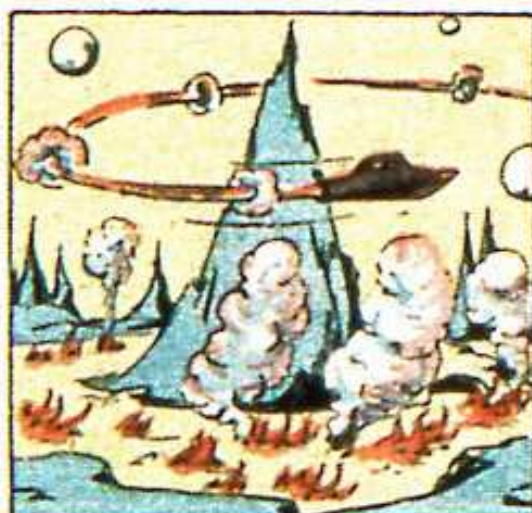


I CAN REMEMBER SLOWLY TURNING INTO A BEAST IT WAS HORRIBLE! THE EMPEROR HAS DISCOVERED THE SECRETS OF THE ANCIENTS. THEY MAKE HIM ALL POWERFUL



HIS HEADQUARTERS IS A CAVE BE- NEATH FIRE MOUNTAIN HE FOUND ME THERE AND MADE ME AN APE!







RECEIVING RADIO ORDERS FROM MAJOR MARS, GRAG USES THE DISINTEGRATING RAY TO BLAST A NEW TUNNEL IN FIRE MOUNTAIN!



USING HIS ANTI-GRAVITY BELT, MAJOR MARS FLIES TO SAFETY UP THE NEW TUNNEL.



THE SPACE EMPEROR IS ALREADY MARCHING WITH AN ARMY OF JOVIANS!

USING THEIR ANTI-GRAVITY BELTS MAJOR MARS AND GRAG FLY TO INTERCEPT THE CHARGING JOVIANS



THE SPACE EMPEROR LEADS HIS GREEN JOVIANS TO SWEEP THE EARTH COLONY FROM THE FACE OF JUPITER



